

TOGETHER WE ARE MAKING A DIFFERENCE

In 2024 LSF made our deepest impact while enjoying our widest reach across geography, demographics, and ages. We have been fortunate to help individuals from infants to the elderly have happier and more hopeful futures..

This year...

- Children and families in the foster care system were met with support and resources by our team of case management professionals, who ensure the child's physical, emotional, and educational well-being.
- At-risk youth, dealing with family issues, trauma, and homelessness, were provided with emotional support, crisis intervention, and counseling services through our group homes and shelters.
- Under-resourced children were served with exceptional educational advancement through our Head Start and Early Head Start programs.
- Refugee families who fled their home country due to persecution were provided with furnished residences, new clothes, groceries, legal services, and mentoring necessary to rebuild their lives in a new nation.
- Vulnerable seniors were protected from exploitation and advocated for by being connected to critical resource



"He went to him and bandaged his wounds, pouring on oil and wine. Then he put the man on his own donkey, brought him to an inn and took care of him." Luke 10:34

40+ YEARS OF GOD'S FAITHFULNESS!

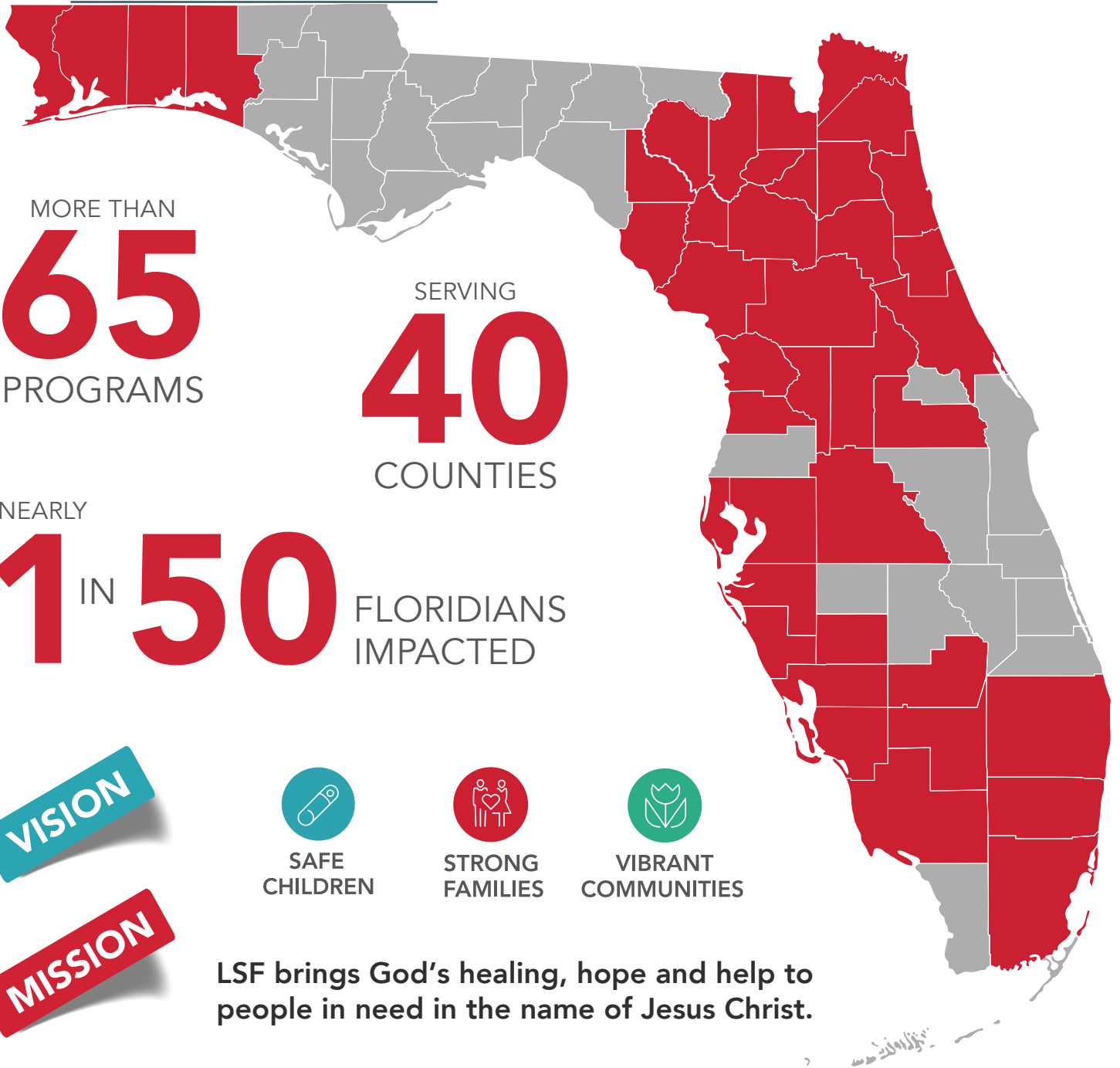
1982

LSF established to sustain the work of Lutheran churches that came together in the 70's and 80's to address the Vietnamese and Cuban refugee crises.

1984

Expanded statewide footprint with residential and counseling services in Southern Florida, including first youth shelter in Oakland Park.

STATEWIDE IMPACT



MORE THAN
65
PROGRAMS

SERVING
40
COUNTIES

NEARLY
1 IN **50** FLORIDIANS IMPACTED

VISION



SAFE CHILDREN



STRONG FAMILIES



VIBRANT COMMUNITIES

MISSION

LSF brings God's healing, hope and help to people in need in the name of Jesus Christ.

1990-92

Children and Families in Need of Services and Guardianship programs launched in Northwest. Doors opened to a new shelter in Fort Myers.

2004

Child Welfare with Case Management services added in Lee County.

2011

Child Welfare with Case Management services added in Pinellas county.

KEEPING CHILDREN SAFE



19,557

children and families served through community counseling, foster care & adoption, and family support programming

550

youth found refuge and direction at one of our shelters or group homes

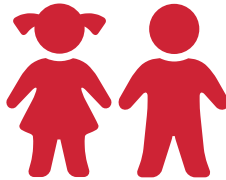


MAKING FAMILIES STRONG

Educated more than

4,992

at risk children and helped their families through LSF Early Head Start and Head Start programs



3,600,000

meals and snacks served to children in Head Start and after school programs

CREATING VIBRANT COMMUNITIES



Managed prevention and treatment of mental health and substance abuse for

1,025,468

individuals through LSF Health Systems in a 23-county region

Served more than

10,912

refugees and immigrants from across the globe



Supported

333

adults at risk of exploitation due to age, disabilities or other life altering issues

2012-13

2019

Head Start Services grow from Hillsborough County & Belle Glade to include Duval, Pinellas, and Palm Beach. LSF Health Systems begins serving Northeast and North Central Florida, improving the quality and level of mental health and substance abuse care in Florida.

Residential services for youth added with the opening of Grace Place in West Palm Beach and Dream Center in Sarasota.

At LSF, we believe in giving families a hand up, not a handout. We provide the tools and resources, but real change only happens when families are ready to reach back and do the work alongside us.

Karen, a devoted mother, loved her life as a happy housewife. But when substance abuse crept in, everything unraveled — she lost her job, strained key relationships, and eventually watched her daughter Tessa be removed from their home. That moment shook Karen awake. Determined to rebuild, she worked closely with her LSF Case Manager to turn her life around.



While eight-year-old Tessa faced fear and uncertainty, her 19-year-old brother stepped up, fostering her while Karen focused on recovery. With fierce determination, Karen got sober, secured a hotel job in Fort Myers, and quickly rose to a management role — something she credits to the steady support of her LSF Case Worker.

Today, Karen and Tessa are thriving. Their story stands as a powerful reminder of resilience and the life-changing impact of a strong support system. As the year comes to a close, we celebrate the many children, families, and communities that have transformed through LSF's mission. Thank you for standing with us — together, we continue making a real difference.

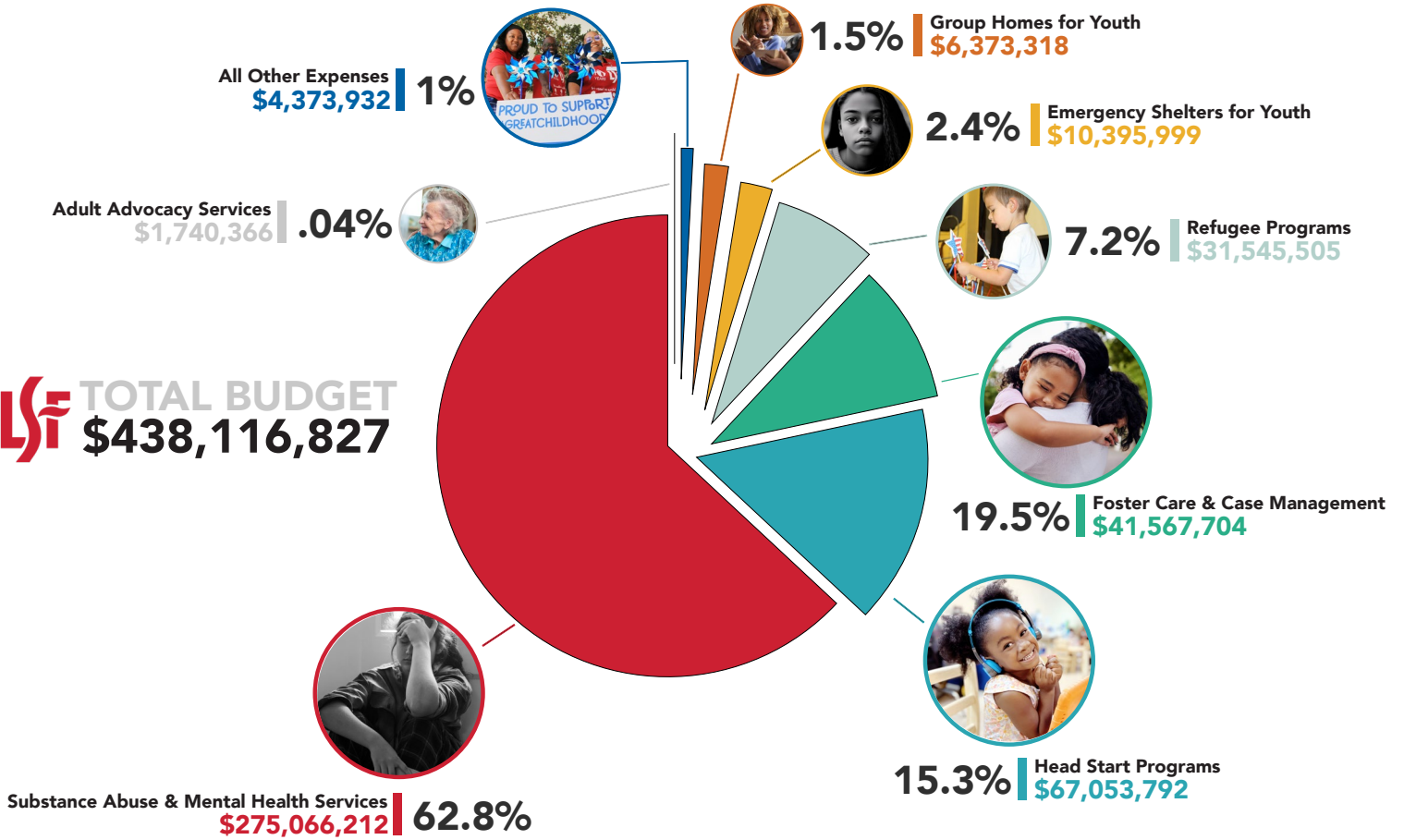
2020

Added Case Management in Manatee and Diversion Services in Pinellas to keep families from entering the child welfare system. Welcomed Children's Board Family Resource Centers with 7 locations in Hillsborough County.

2021-22

Acquired Miami Bridge in Miami-Dade County adding two more 24/7 youth shelters. Polk County & N. Florida Case Management added, making LSF the largest provider of child welfare services in FL.

LSF TOTAL BUDGET
\$438,116,827



 EMPLOYEES **2,110** | **\$438M** | BUDGET 

A COPY OF THE OFFICIAL REGISTRATION (#CH-13359) AND FINANCIAL INFORMATION MAY BE OBTAINED FROM THE DIVISION OF CONSUMER SERVICES BY CALLING TOLL FREE 1-800-435-7352 WITHIN THE STATE. REGISTRATION DOES NOT IMPLY ENDORSEMENT, APPROVAL OR RECOMMENDATION BY THE STATE. LUTHERAN SERVICES FLORIDA RETAINS 100% OF ALL CONTRIBUTIONS RECEIVED.



GIVE / CONNECT



[LSFNET.ORG/DONATE](https://lsfnet.org/donate)



QUESTIONS?

makeadifference@lsfnet.org